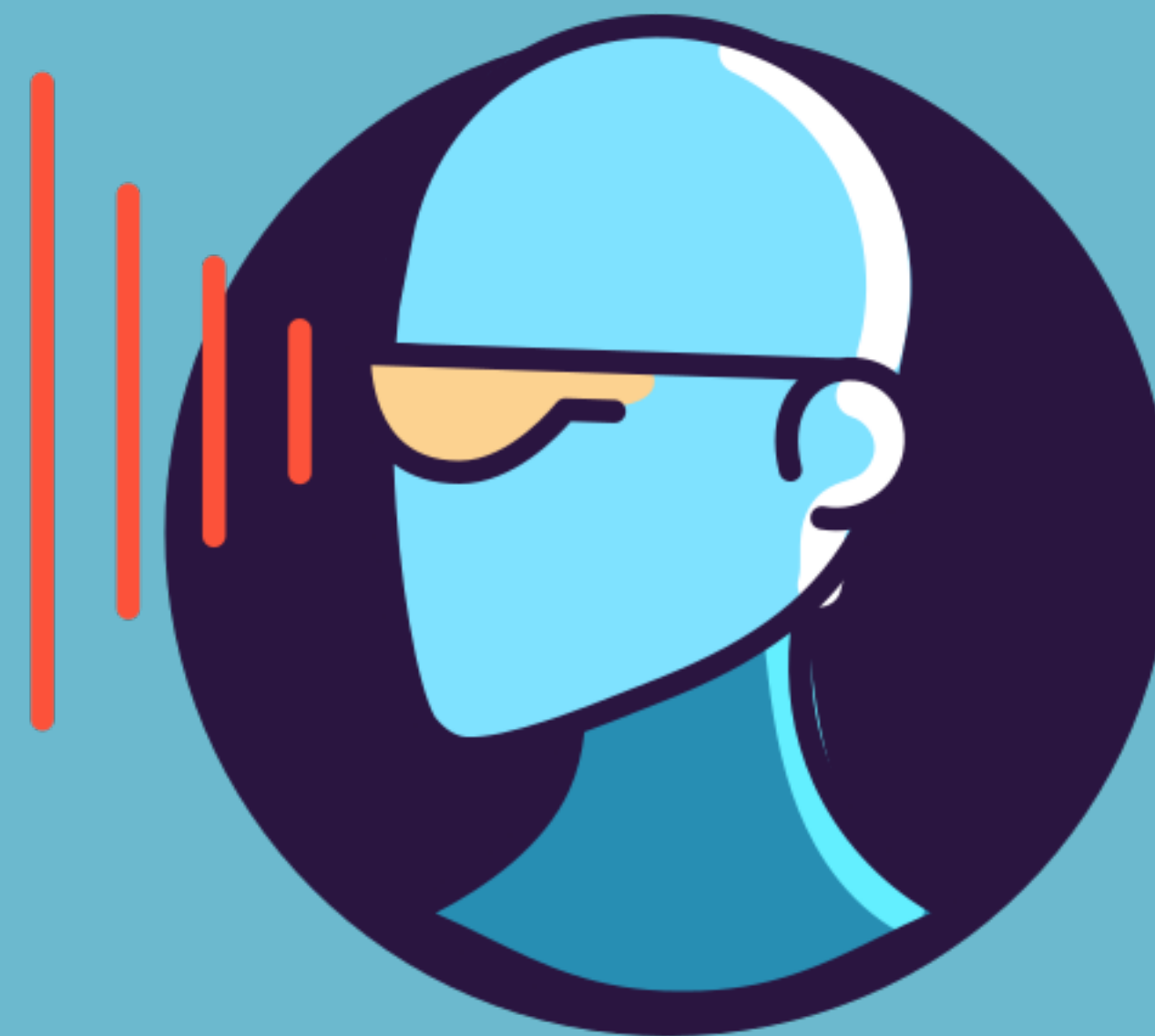


LITHME Newsletter: #2

EU Cost Action 'Language in the Human-Machine Era'
(LITHME)



In this Newsletter:

2021 will be an exciting year for LITHME!

New Chair of Computational Linguistics working group

The report is coming! Join the writing workshops

Working group meetings open for all members

Recordings soon available

Reminder: How to contribute to the newsletter?

CALLS FOR PAPERS

Contact Details

Subscription Details

CALLS FOR PAPERS

- Minds & Machines Special Issue on 'Machine Learning: Prediction Without Explanation?'

Submission deadline: February 28

Invited are papers focusing on but not restricted to the following topics:

(How) can ML results be used for the sake of explaining scientific observations?

If so, what is the nature of these explanations?

Will future science favor prediction above explanation?

If so, what does this mean for science-based decision and policy making?

What is explained about ML by methods such as saliency maps and adversarial?

Does ML introduce a shift from classical notions of scientific explanation, such as causal-mechanistic, covering law-, or unification-based, towards a purely statistical one?

(Why) should we trust ML applications, given their opacity?

(Why) should we care about the apparent loss of explanatory power?

Read more:

<https://www.springer.com/journal/11023/updates/18180316>

- The First Workshop on NLP for Indigenous Languages of the Americas (AmericasNLP)

June 11 in Mexico City; co-located with the 2021 Annual Conference of the North American Chapter of the Association for Computational Linguistics (NAACL-HLT 2021)

Submission deadline: March 15

Website: <http://turing.iimas.unam.mx/americasnlp/>

2021 will be an exciting year for LITHME!

May it be a year of success, interesting discoveries, heated debates and, hopefully, resumed in-person meetings to all of us!

The new year has already seen some LITHME working group meetings, and more are about to take place soon.

With the help of the report on emerging technologies impacting language, and animated videos showing some of these effects in everyday life, our network aims to become more visible to the research community and public in 2021. Let's do it!

New Chair of Computational Linguistics working group

The previous Chair of working group 1 (Computational Linguistics), Sule Yildirim Yayilgan, had to step down suddenly last year due to unforeseen circumstances. We sincerely thank Sule for her work, and wish her well. The new Chair is Rui Manuel Sousa Silva (rssilva@letras.up.pt). Welcome, Rui!

Over the next few months, Rui will be busy finishing up our central forecast report, 'The Dawn of the Human-Machine Era'.

The report is coming! Join the writing workshops

There is still time to contribute to the forecast report. We invite all network members to join either or both of two collaborative writing workshops that take place on January 29 and February 8. These will involve a joint video call in Google Meet, and co-writing in Google Drive.

If interested, you can sign up in the availability spreadsheet located in the Drive subfolder 'Tech forecasts':
<https://docs.google.com/spreadsheets/d/1gulIHHIGVdoqR8NYVmpHvNIFGImtkZTrkpf6gCqIV4/edit#gid=0>

You are, of course, also welcome to contribute to the report outside of these workshops - you'll see it's currently a work in progress!

[READ MORE](#)

Working group meetings open for all members

- WG5 'Language learning and teaching' will hold a meeting on January 26 between 14.00 and 17.00 CET. During this meeting, volunteers will give short presentations on the use of highly efficient technologies relevant for teaching and learning practices or on their self-made technologies used in their teaching and students' learning. Other LITHME members are very welcome to attend the meeting and share their insight!

The schedule can be viewed here:

<https://drive.google.com/file/d/1P8C6DLgpBqqP3XiFOjwgf9X9ohB3SaMy/view?usp=sharing>.

The link to the meeting in Microsoft Teams: <https://teams.microsoft.com/l/meetup-join/19%3a7a56090b8cad4160ad20f2095f7389d9%40thread.tacv2/1610565985876?context=%7b%22Tid%22%3a%22afbb4e09-5652-4817-9335-cd1413fac95a%22%2c%22Oid%22%3a%227872e889-79f5-428f-a07f-6607ee3c0ad3%22%7d>.

- WG6 'Ideologies, beliefs, attitudes' will host a talk by Dr. Patrick McCrae, Managing Director of LangTec - Semantic Text Processing (<https://www.langtec.de>) on March 25 at 14.00 CET.

The talk will give an insight into the working fields of the company. The meeting will progress to discuss the role of AI, automatic language processing and NLP in reproducing cultural biases as well as social and sociolinguistic hierarchies.

All members of LITHME are very welcome. Members of WG1 are particularly invited. The link to the Zoom meeting: <https://ucd-ie.zoom.us/j/256359782>.

Recordings soon available

At the meeting of WG3 'Language rights' on January 7, there were two presentations by external presenters:

- 'New technologies, new social media and the European Charter for Regional or Minority Languages' - Tom Moring and Elin Haf Jones (the charter can be accessed here: <https://rm.coe.int/new-media-report-web-en/168098d888>).

- 'On human rights and language rights' - Claude Cahn, Human rights officer in OHCHR - Office of the High Commissioner for Human Rights, Indigenous Peoples and Minorities Section, UN Office Geneva (see <https://www.linkedin.com/in/claude-cahn-32124487/>, <https://www.claudecahn.net>).

A recording of the presentations will be made available (the channel is to be discussed).

Reminder: How to contribute to the newsletter?

Everyone is welcome to add content for the monthly newsletters. If you wish to share information that may be of interest to our action as a whole or to some working groups, please go to the 'Communications' folder in the Google Drive workspace of LITHME. There, you can find a subfolder 'newsletters' which contains previous newsletters, and a live document for editing the content of the next newsletter.

Contact Details

Website: <http://lithme.eu>

Social media:

Twitter: twitter.com/LgHumanMachine

Facebook: facebook.com/LgHumanMachine

LinkedIn: linkedin.com/company/lghumanmachine

Instagram: instagram.com/languagehumanmachineera